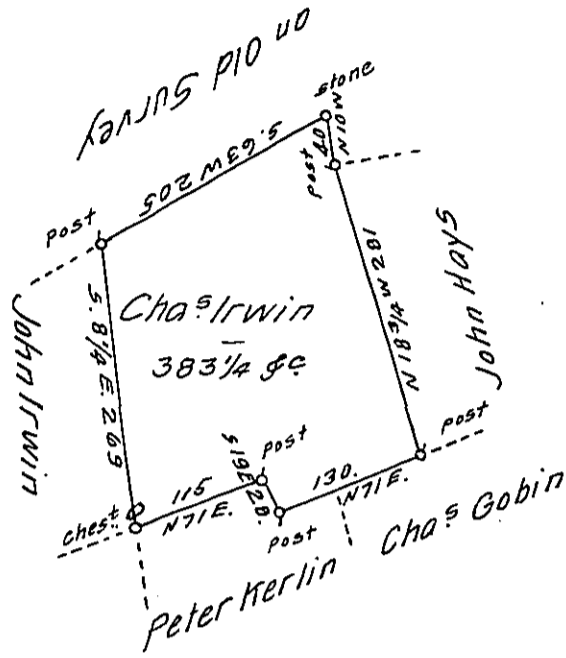


Sug. Loaf -
Luzerne.
& Nescopeck..

X



A Draft of a tract of land Called — Situate Adjoining Land Surveyed for John (obl.) in the County — Luzerne, Containing three Hundred & Eighty three Acres 1/4 (obl.) Surveyed for Cha. Irwin the 30th day of Sep^r 1793 by Virtue of a Warrant dated the 13th day of June 1793.

To

by

Daniel Brodhead Esq^r }
Surv^r Gen!

W^m Gray D. S.

IN TESTIMONY that the above is a copy of the original remaining on file in the Department of Internal Affairs of Pennsylvania, made conformably to an Act of Assembly approved the 16th day of February, 1833, I have hereunto set my Hand and caused the Seal of said Department to be affixed at Harrisburg, this third day of November 1911.

Hurray Hancock
Secretary of Internal Affairs.